



16TH INTERNATIONAL CONFERENCE ON
THE EUROPEAN ENERGY MARKET
18-20 September 2019, Ljubljana, Slovenia

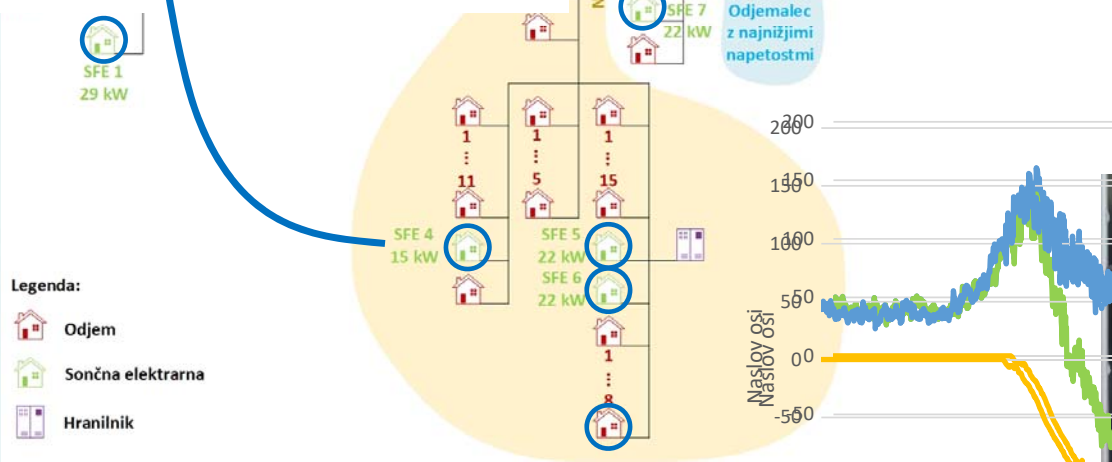
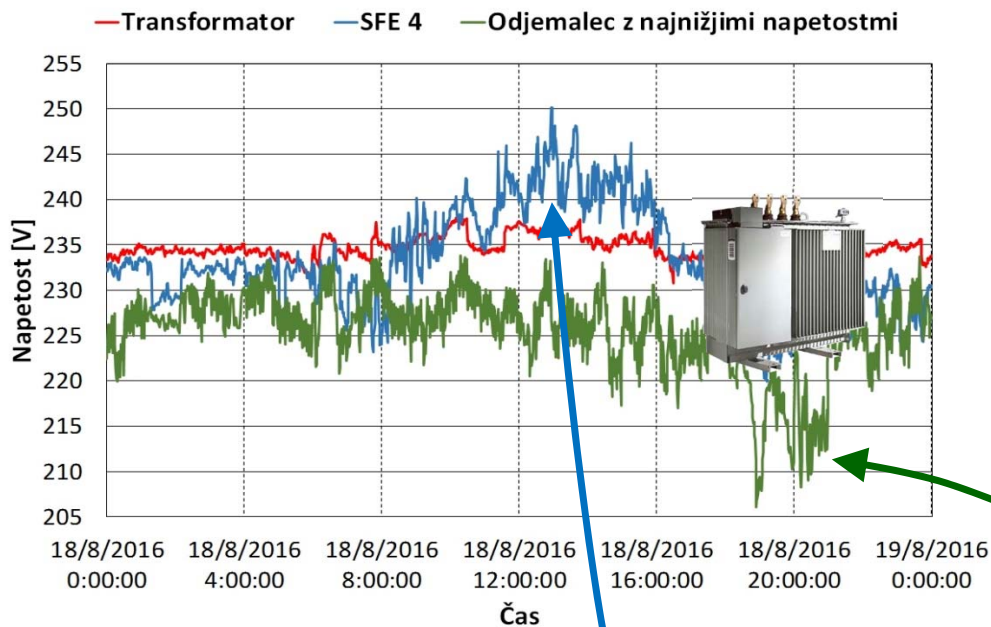


Community storage in distribution low voltage network

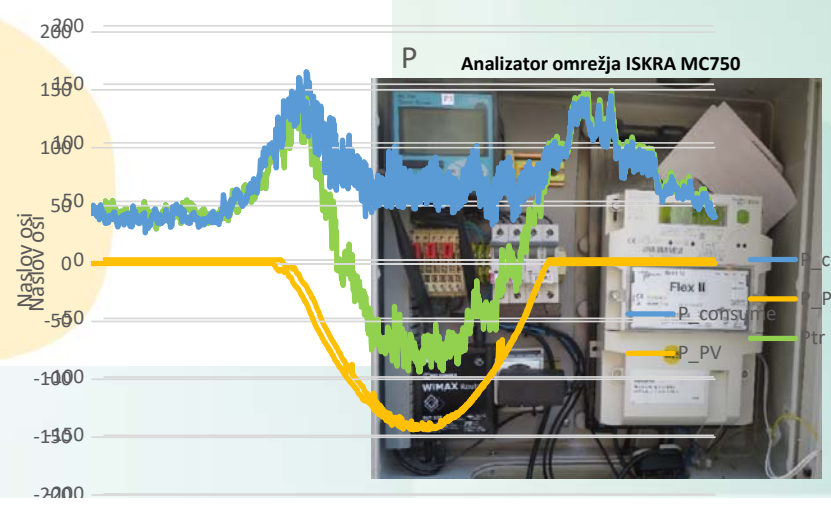
Marjan Jerele

Ljubljana, 18 September 2019

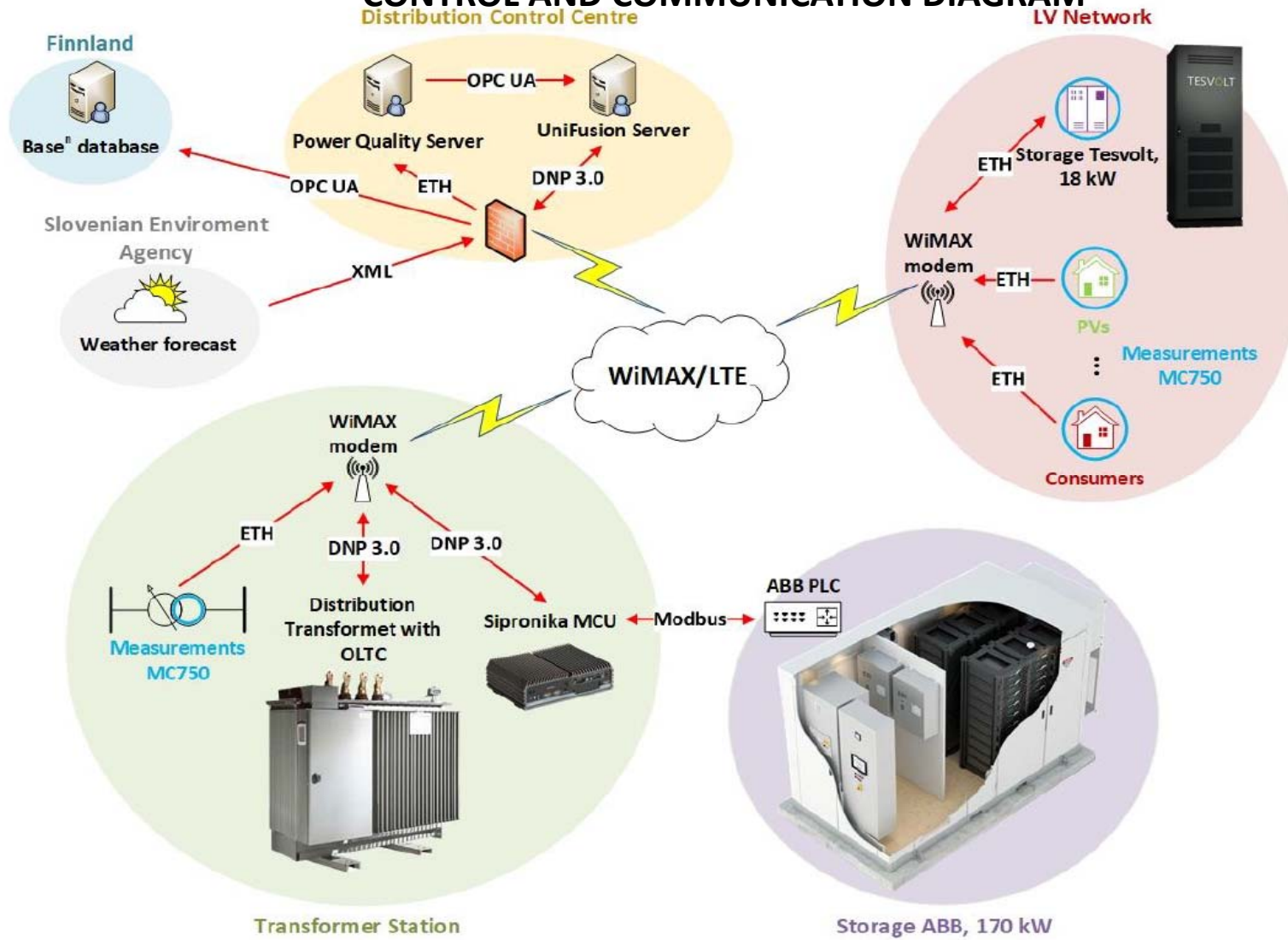


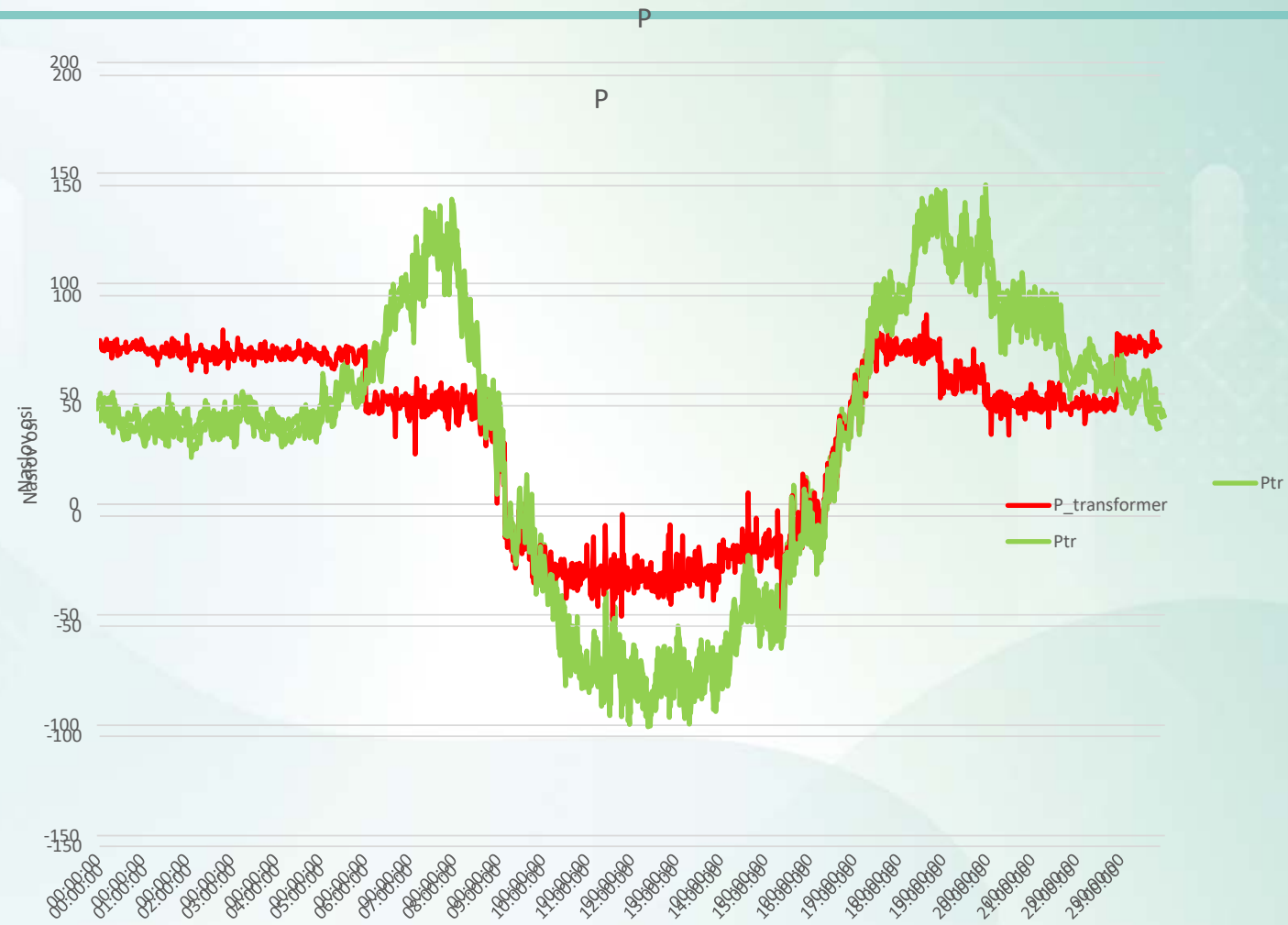


Demo site

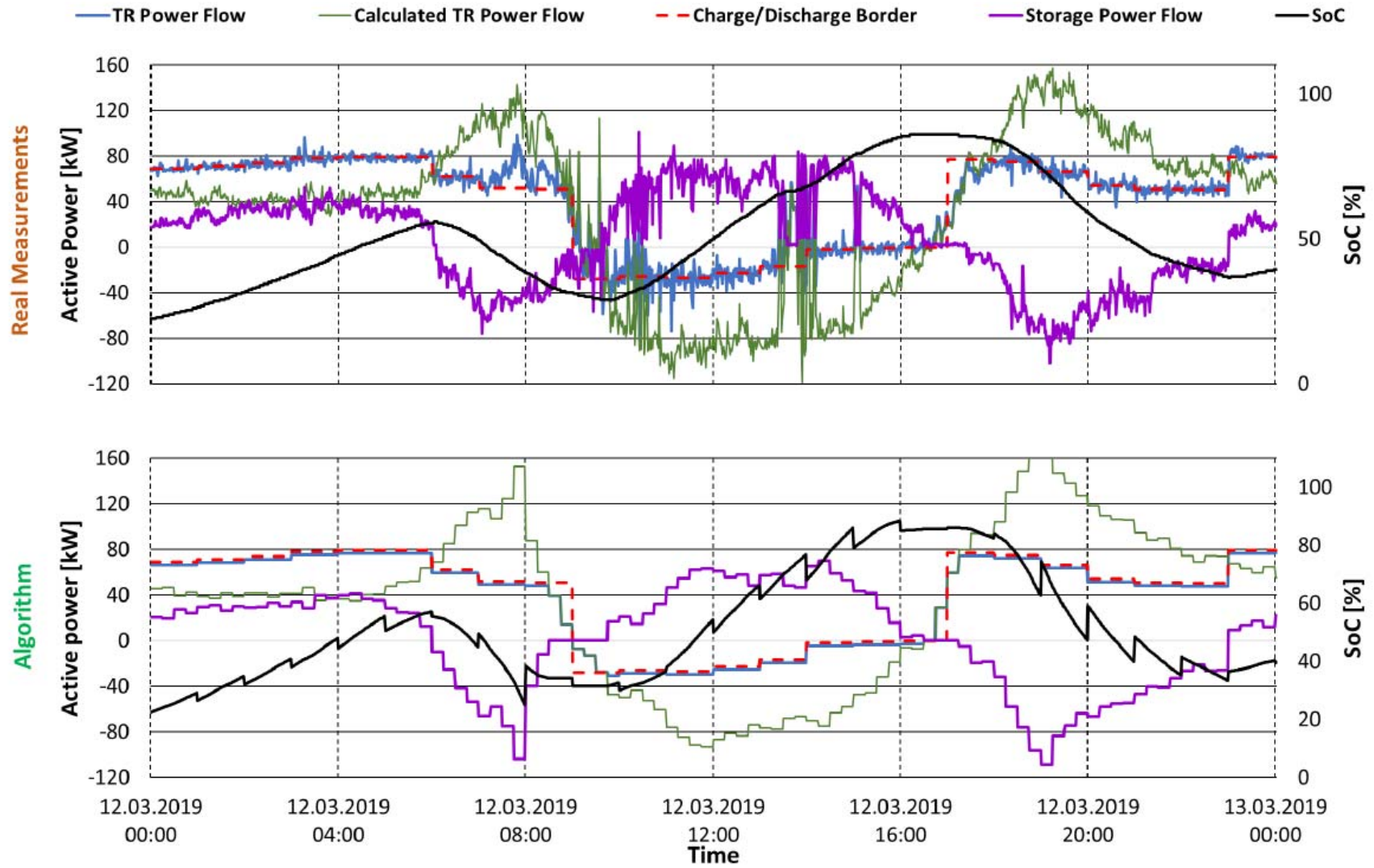


CONTROL AND COMMUNICATION DIAGRAM

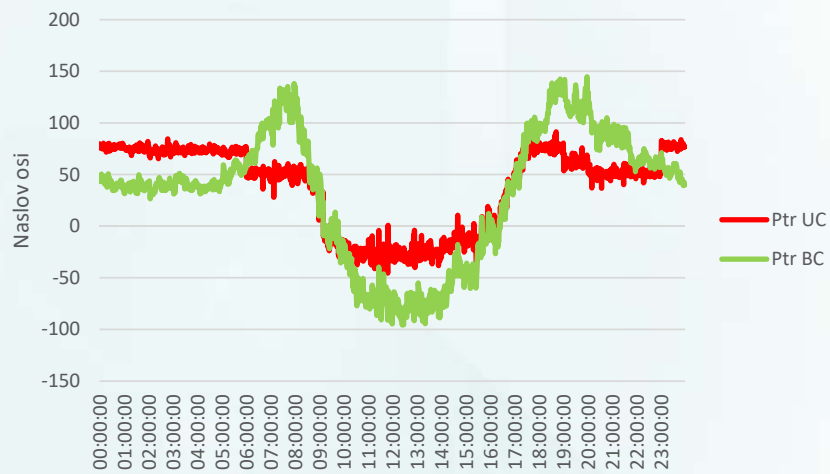




COMMUNITY STORAGE DAILY LOAD DIAGRAM



P - 27. 02. 2019



K2	Increased self consumption	SCL	60,64%
		SSL	33,33%
K3	Change of peak to average demand ratio	dPARdemand	- 46,48%
K4	Relative peak power change	dRPP	- 36,83%
K5	Grid (transformer) losses change	dEloss	- 37,89%
K6	Grid energy consumption change	dEgrid	-20,56%
K9	Full cycle equivalents of storage	FCE	69,34%
K11	Storage efficiency	ε storage	68,54%



- 6 months experience:



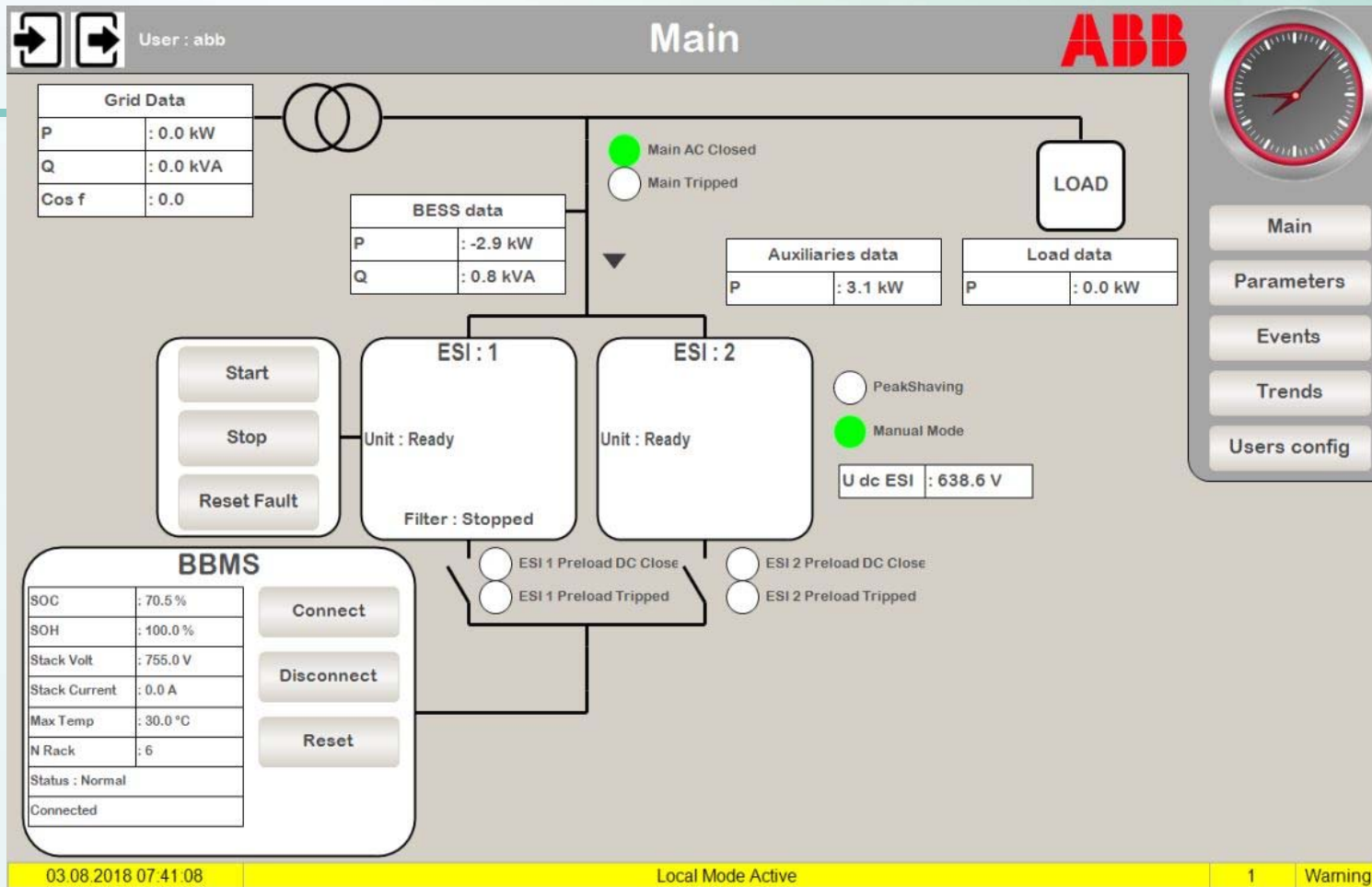
- All functionalities successfully confirmed.
- High reduction of transformer load flows.
- Reliable operation of: .
 - EG broadband radio (WiMax).
 - EG control and monitoring systems.



- High initial number of storage faults.
- High storage/system investment costs.
- Low system efficiency
- High frequency noise generation.
- High system complexity.
- Limited system life time



TP Suha and ABB BESS



BESS OP

Sipronika UniFusion
Version 1.0

Time: 12:51:51
Date: 17. 09. 2018
User: elg

Accept Log off

BESS PCC Algorithm Events

System Table

Started	Status
40,50 %	SOC
100,00 %	SOH
From main controller	Automatic mode
Idle	StartStopAckFault
Remote	Mode switch position

Peak shaving from BESS

-----	-----	Activate peak shaving from BESS controller	Exe
0	0,00 kW	Upper limit for Peak shaving	
0	0,00 kW	Lower limit for Peak shaving	
0	0,00 kW	Power output target	

Control from Main controller

-----	-----	Activate control from Main controller	Exe
-------	-------	---------------------------------------	-----

Self consumption compensation

Disabled	Self consumption comp. for P <> 0		
Disabled	Self consumption comp. for P == 0		
-----	-----	Enable self consumption comp. for P <> 0	Exe
-----	-----	Disable self consumption comp. for P <> 0	Exe

Main Control

Accepted	17. 09. 2018 07:22:35	Start	Exe
Failure	16. 09. 2018 18:23:54	Stop	Exe
Failure	16. 09. 2018 09:32:13	Ack Fault	Exe

on-line

Windows taskbar: 12:51 17. 09. 2018

EG SCADA



EG SCADA



Marjan Jerele

Elektro Gorenjska d.d., Mirka Vadnova 3a, 4000 Kranj

marjan.jerele@elektro-gorenjska.si